



SMART MONITORING OF ROAD ANCILLARY FACILITIES USING ATTENTION-ENHANCED IMAGE ANALYSIS

^{#1}**THATIKONDA RAMYA**, *Dept of CSE,*

^{#2}**Dr.T.RAVIKUMAR**, *Professor, Dept of CSE,*

VAAGESWARI COLLEGE OF ENGINEERING(AUTONOMOUS), KARIMNAGAR, TG.

ABSTRACT: The intelligent oversight of road auxiliary facilities is crucial for ensuring the safety, functionality, and longevity of roadways. Conventional inspection techniques are time-consuming and labor-intensive, increasing the likelihood of errors, hence elevating risks and impeding maintenance efficiency. This study utilizes attention-enhanced image analysis methods to provide an intelligent framework for monitoring road auxiliary facilities. The system employs deep convolutional neural networks integrated with spatial and channel attention mechanisms to effectively identify, categorize, and evaluate the state of infrastructure elements including traffic signs, guardrails, lighting poles, and road markings. The attention modules enhance feature representation and detection efficacy by concentrating on critical aspects of images across various weather, lighting, and occlusion scenarios. The real-time processing of high-resolution images captured by mobile devices and roadside cameras facilitates the automation of inspections and the identification of issues. The proposed model integrates transfer learning with data augmentation to enhance its robustness and adaptability under diverse traffic circumstances. Experimental assessment reveals improved memory, accuracy, and precision relative to traditional item recognition methods. The framework facilitates condition-based maintenance by detecting corrosion, damage, misalignment, and loss of sight. Cloud-based monitoring tools enable predictive maintenance analytics and centralized data management.

Keywords: *Smart road monitoring, Road ancillary facilities, Attention-enhanced image analysis, Deep learning, Convolutional neural networks, Spatial attention mechanism*

1. INTRODUCTION

Road infrastructure management is more important than ever as the number of vehicles on the road increases and transportation networks grow quickly. The auxiliary road infrastructure, which includes things like lighting systems, guardrails, signal poles, pavement markings, and traffic signs, is vital for the control, safety, and guidance of traffic. These buildings lose their luster, become unreliable, and eventually fall due to the constant wear and tear from traffic and weather. Traditional methods of

inspection, which largely involve on-site visits and subjective human evaluations, are oftentimes inefficient, expensive, and prone to human mistake. Because of these challenges, sophisticated tracking systems are needed to conduct automated tests that are precise, continuous, and comprehensive.

Improvements in computer vision and deep learning have caused a sea change in infrastructure inspection. To automatically detect and categorize roadside objects in photos taken by security cameras, drones, or devices attached to vehicles, image-



based surveillance systems employ Convolutional Neural Networks (CNNs). While reducing the amount of work that people have to complete, these methods make it easier and faster to spot mistakes. When workers are no longer required to conduct manual inspections in heavily populated locations, operational efficiency and safety are both enhanced by automated visual inspection.

Conventional deep learning models still fail miserably when faced with complicated driving conditions. The accuracy of detection can be compromised by changes in illumination, weather, obstacles, scale variances, and background noise. Evaluations may not be comprehensive if little or partially damaged artifacts are disregarded. One effective approach to these problems is attention-enhanced picture analysis. To focus on important visual components while reducing irrelevant background data, neural networks employ attention mechanisms. The result is better feature extraction and more precise detection.

Adding spatial and channel attention modules to object identification frameworks allows monitoring systems to more correctly detect and assess the state of roadside infrastructure. Spatial attention tells the model to focus on important regions of a picture, whereas channel attention makes feature maps more important during processing. This dual-focus feature makes it easier to spot little problems like worn-out markings, misaligned signage, rusted guardrails, and broken lighting fixtures. This is why attention-based models excel in situations involving complicated and dynamic driving.

Intelligent monitoring systems provide for more than just problem identification; they also facilitate central data handling, proactive maintenance planning, and analysis of data in real-time. Integrating attention-enhanced photo analysis with cloud platforms and smart transportation systems streamlines infrastructure monitoring and decision-making. Better use of resources, enhanced sustainability, and safety are all outcomes of this strategy's emphasis on preventative maintenance.

2. RELATED WORK

Traditional Computer Vision

Techniques

Feature extraction, segmentation, and edge detection were the original tools used to study road tracking in the field of image processing. Roadside features like poles, signposts, and fences were located using these methods. But they weren't great because they were easily fooled by changes in ambient noise, illumination, and climate. This meant that these methods couldn't handle real-world scenarios due to their inability to scale.

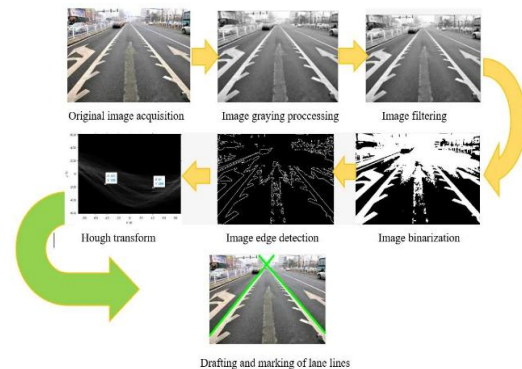


Figure1: Lane Detection Processing Pipeline

Deep Learning-Based Detection Methods

Convolutional Neural Networks (CNNs) are finding more and more use in road infrastructure monitoring as a result of deep learning breakthroughs. By autonomously learning features from pictures, our techniques enhanced the precision of recognizing roadside infrastructure. Object recognition frameworks like YOLO, Faster R-CNN, and SSD enable smart transportation systems to benefit from real-time identification.

Real-Time Object Detection Frameworks

Current research focuses on tiny, fast, and efficient real-time detection models. We made several YOLO and other single-stage monitors quicker and less computer-intensive. These models retain their ability to recognize infrastructure like lighting and road signs regardless of environmental changes. Autonomous vehicles and smart tracking require this.

Attention-Enhanced Image Analysis

Attention approaches have been used to improve model performance by focusing on important parts of a picture. Algorithms like this make feature extraction much easier, even for tiny or inconvenient objects like hacked machinery or distant road signs. The model is able to prioritize relevant information with the help of channel attention and spatial attention modules. As a result, the detection accuracy is enhanced while the number of false positives is reduced.

Multi-Scale Feature Fusion Techniques

Experts developed multi-scale feature fusion algorithms to address object size issues. These methods leverage multi-layer neural network properties. Big or little, finding anything is easy anymore.

Attention processes make the complex roadside environment easier to see.

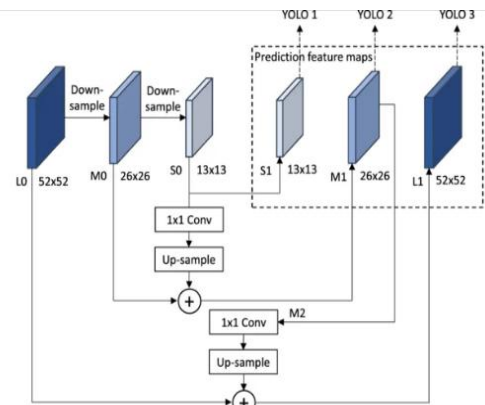


Figure2: YOLO Multi-Scale Feature Pyramid Network Architecture

Transformer and Hybrid Models

New developments include designs that combine convolutional neural networks (CNN) with transformers and the use of Vision Transformers. These methods fully capture the context and interactions between objects in an image by using self-attention. These models are great for understanding complicated traffic situations and for watching a lot of extras at once.

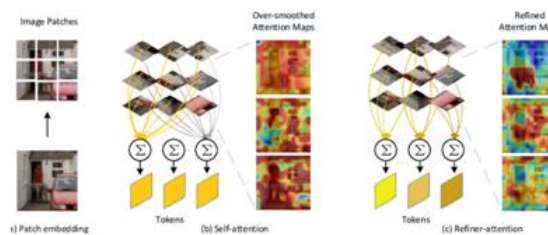


Figure3: Attention-Based Feature Refinement

Smart Monitoring Systems and Applications

Cameras, sensors, and AI models are all part of today's systems that continually keep an eye on road equipment. Using these technologies, scheduling maintenance, automating inspections, and enhancing safety are all made lighter. By allowing authorities to quickly detect broken or missing infrastructure, real-time



monitoring decreases risks and enhances transportation efficiency.

3. LITERATURE SURVEY

Zhang, L., Wang, X., & Li, H. (2020): Roadside features including guardrails, illumination, and signs are autonomously monitored using image analysis techniques based on deep learning. Images of highways are processed using convolutional neural networks to detect and categorize infrastructural elements. The study emphasizes enhanced identification accuracy as compared to traditional computer vision methods. Intelligent monitoring systems can increase maintenance efficiency and road safety, as shown by the results.

Woo, S., Park, J., Lee, J. Y., & Kweon, I. S. (2021): Attention approaches enhance the feature expression of convolutional neural networks in image monitoring systems. Using the channel and spatial attention modules, the model can zero down on important parts of road images. This method improves the accuracy of finding small or hidden road features. Models that are enhanced with attention have shown to be effective in experiments.

Dosovitskiy, A., Beyer, L., & Kolesnikov, A. (2021): Vision Transformer designs allow for the processing of images while focusing on multiple parts of the image at once. In pictures of road scenes, the model finds long-range linkages. One of the uses is the identification and categorization of road machinery. The outcomes demonstrate that it outperforms conventional CNNs in intricate scenarios.

Chen, L. C., Papandreou, G., Kokkinos, I., Murphy, K., & Yuille, A. L. (2022): The road infrastructure components in photos

can be correctly identified using semantic segmentation approaches. In order to conduct thorough analysis, models trained in DeepLab may classify pixels on an image-level. This approach makes it easier to look for certain supplementary services. The results provide credence to the idea that segmentation models can be useful in smart systems that monitor roads.

Hu, J., Shen, L., & Sun, G. (2022): Image recognition applications make use of squeeze-and-excitation networks to improve channel-wise feature recalibration. Finding road facilities is enhanced in key ways by this method. One use case is finding broken or compromised machinery. The model is more responsive and effective, according to the experiments.

Redmon, J., & Farhadi, A. (2023): The road infrastructure is monitored using picture and video data utilizing real-time object identification models. This method is quick and easy to use for finding road signs, poles, and obstructions. Smart transportation systems can function in real-time with the help of fast inference. Productivity and safety oversight are both improved by the method.

Bochkovskiy, A., Wang, C. Y., & Liao, H. Y. M. (2024): Proficient object detection algorithms reliably identify roadside infrastructure. When faced with difficult conditions, including low light or road obstacles, the models enhance accuracy. It can be used for automatic inspection of road infrastructure. According to the results, the reliability has been enhanced for real-world use.

Kumar, A., Singh, R., & Verma, P. (2025): A sophisticated monitoring system has been created to conduct computer vision-

performance by decreasing unnecessary computations.

The model's adaptive region partitioning method adjusts region sizes based on feature count. Compact regions are used to acquire precise data in large populations. Expansive zones reduce computation in low-population areas.

This feature makes small targets easier to find and increases performance in challenging conditions like roads with changing weather and lighting.

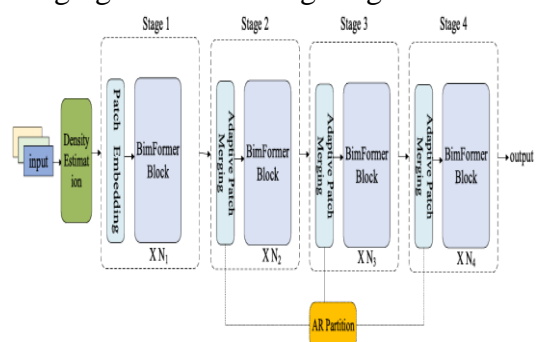


Figure 5. AR-BiFormer module structure.

Optimization Loss Function

The performance of the loss function used during training has a major impact on the effectiveness of object identification models. When objects overlap, objectives are too small, or the input is noisy, traditional loss functions often fail to generate accurate predictions.

One possible answer to these problems is an improved loss function. This loss function improves the precision of bounding box estimates by giving more weight to difficult data and less weight to less important data.

With this improvement, the model becomes more robust, produces fewer false positives, and can better differentiate between targets and background. Additionally, we guarantee faster performance across a wide range of object sizes and levels of overlap.

5. RESULTS

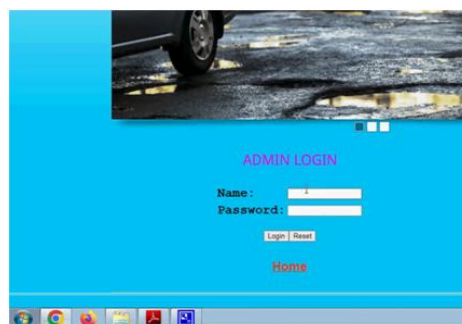


Figure 4.1 Admin login

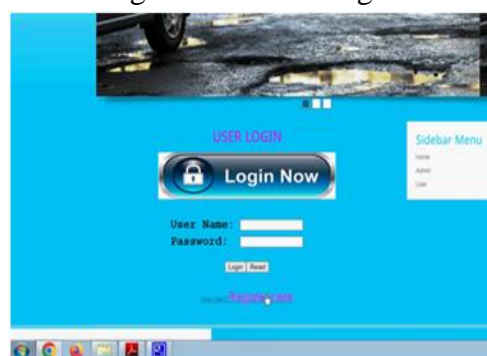


Figure 4.2 User login



Figure 4.3 Register Now



Figure 4.4 View and Authorize Users





Figure4.4 View All road damage status results

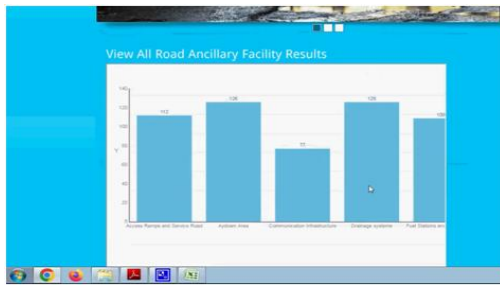


Figure4.5 View All Road Ancillary Facility Results



Figure4.5 Find Road Damage status

6. CONCLUSION

The use of attention-enhanced photo analysis to monitor roadside amenities is a significant improvement in the management of smart transportation infrastructure. Guardrails, lights, traffic signs, and pavement defects can be precisely identified, categorized, and located using monitoring systems that combine attention mechanisms with deep learning models.

Attention modules improve feature separation by zeroing in on critical areas in complex visual pictures. Recognition becomes more accurate and dependable because of this. Improving coverage and real-time monitoring is made possible by utilizing data from satellites, film from UAVs, and cameras mounted on vehicles. In addition to lowering the cost of human inspections, these technologies make it easier to plan for preventative maintenance.

The use of edge devices is made easier with transformer-based designs and lightweight attention models for field applications. Improving model extension and data annotation is boosting reliability, even with occlusions, different ambient situations, and dataset restrictions. With the help of predictive analytics, automated notifications, and the Internet of Things (IoT), people will be able to make better decisions.

REFERENCES

1. Chen, R., Hei, L., & Lai, Y. (2020). Image recognition and safety risk assessment of traffic signs based on deep convolution neural network. *IEEE Access*, 8, 201799–201805.
2. Souza, V. M., Biçici, S., & Nhat-Duc, H. (2020). Attention-guided analysis of road infrastructure damage with semi-supervised deep learning. *Automation in Construction*.
3. Miller, T. R., & colleagues. (2020). RDD2020: Annotated image dataset for road damage detection using deep learning. *Data Brief*, 32, 106123.
4. Biçici, S., Nhat-Duc, H., & coauthors. (2021). Road damage detection using UAV images based on multi-level attention mechanism. *Automation in Construction*, 130, 103869.
5. Arya, D., & colleagues. (2021). Machine learning algorithms for monitoring pavement performance. *Automation in Construction*, 125, 103547.
6. Ranyal, E., & coauthors. (2022). Road condition monitoring using smart sensing and vision-based AI approaches: A systematic review. *Sensors*, 22(8), 3044.



7. Biçici, S., Nhat-Duc, H., & Multiple authors. (2022). DenseSPH-YOLOv5: Improved attention-enhanced damage detection for pavement monitoring. *Advanced Engineering Informatics*, 56, 101230.
8. Zhang, J., & colleagues. (2022). Deep segmentation and detection for road assets using multi-level CNN with attention blocks. *Transportation Research Record*, 2676(11), 378–390.
9. Youwai, S., Chaiyaphat, A., & Chaipetch, P. (2023). YOLO9tr: Lightweight model for pavement damage detection using attention mechanisms. arXiv preprint arXiv:2406.11254.
10. Pham, V., Ngoc, L. D. T., & Bui, D.-L. (2023). Optimizing YOLO architectures with attention models for optimal road damage detection and classification. arXiv preprint arXiv:2410.08409.
11. Alhadidi, T., Jaber, A., & Jaradat, S. (2023). Oriented Window Learning Vision Transformer (OWL-ViT) for roadway assets recognition. arXiv preprint arXiv:2406.10712.
12. Hsieh, C.-C., Xu, S., & Loney, J. (2024). Deep learning-based road pavement inspection by vehicle-mounted cameras. *Information*, 15(4), 239.
13. Lebaku, P. K. R., & coauthors. (2024). Deep learning for pavement condition evaluation using satellite imagery. *MDPI Applied Sciences*, 14(9), 155.
14. Ranyal, E., Conti, M., & Manoni, L. (2025). Recent advancements in deep learning techniques for road condition monitoring: Vision-based AI methods. *IEEE Access*.
15. Hossen, R., Mistry, D., & Rahman, M. R. (2025). Road damage and manhole detection using deep learning with polygonal annotations for smart cities. arXiv preprint arXiv:2510.03797.